

March 2024

URBAN
PROPERTY

E Ethos
Urban

C O X

ep | environmental
partnership

Edmondson Park Sites 1-3 Increased Tree Canopy and Planting Area to Laneways



coxarchitecture.com.au

Public Domain

To further reduce heat generation in the laneways, the landscape scheme has increased planted areas within the public domain by 511.5m² to facilitate a greater proportion of planted area and additional tree plantings.

These will increase shading of the public domain and of west facing building facades in addition to enhancing the green character of the laneways. These are identified on the right in blue.

No.	Area	Additional Trees
1.	116.7m ²	1
2.	75.7m ²	2
3.	80.4m ²	2
4.	98m ²	3
5.	18.1m ²	1
6.	22.7m ²	3
7.	29.6m ²	2
8.	29.9m ²	2
9.	22.1m ²	3
10.	18.3m ²	1
Total	511.5m ²	20



Additional Tree Canopy

Tree plantings in laneways



Botanical Name:
Ficus rubiginosa
Common Name:
Port Jackson fig
Height:
10-25m
Width:
20m



Botanical Name:
Lophostemon confertus
Common Name:
Brush Box
Height:
15m
Width:
10m



Botanical Name:
Elaeocarpus reticulatus 'Prima Donna'
Common Name:
Blueberry ash
Height:
8-10m
Width:
3-4m



Botanical Name:
Pyrus calleryana 'Chanticleer'
Common Name:
Callery Pear
Height:
8 - 10m
Width:
3m



Permiabile Paving

The scheme has also introduced permeable Eco-trihex paving in varying tones to replace the previous asphalt pavement. This will lighten up the character of the hard surfaces and reduce heat absorption.

The permeable paving will also contribute to reducing temperatures through water evaporation. Collected and stored water can contribute to irrigation of the gardens.

Pedestrian priority green streets (Access Roads)



Granite stone paving colour gradient to define areas in zone.
(Pedestrian/planting/vehicular traffic zones)

- Charcoal granite paving (vehicular zone)
- Grey granite paving (in between planting zones)
- Grey/white granite paving (pedestrian zone)

Laneways

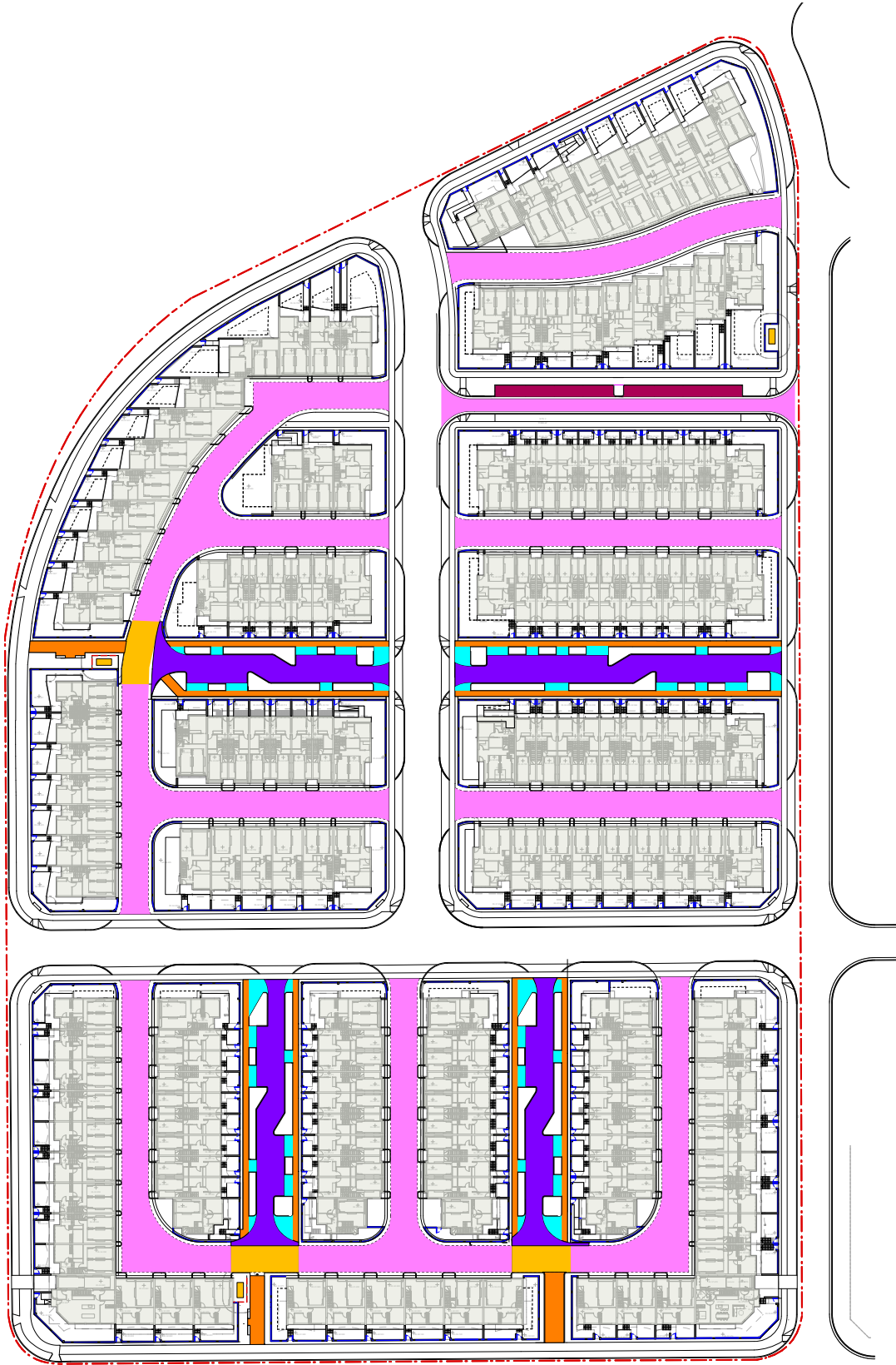


Permeable patterned Eco-trihex paving.
Laneway paving pixels out to light grey at pedestrian crossing points to define zone.

- Charcoal eco-trihex paving (parking zone)
- Patterned charcoal/grey eco-trihex paving (vehicular zone)
- Grey eco-trihex paving (pedestrian crossing zone)



- Eco-trihex paving**
- Reduces the amount of runoff
 - Helps to cool area through water evaporation
 - Reducing use of dark colours to help further reduce urban heat island effect
 - Can also be feed into water storage system for re-use if desired



Laneway Garden Beds and Planting

The beds between the laneway driveways will be planted with a combination of shrubs, grasses and trellis plantings.

Along with the cascading plantings falling from the upper balcony planters these will add to the green character of the laneways and the absorption of heat.

Hedge plantings in larger sized planters between garages



Syzygium australe 'Straight & Narrow'



Callistemon salignus 'Great balls of fire'

Visualisation



The height of hedges in background look correct just fill out more so fuller rather than so trimmed to show more volume.

Climbers for trellis in smaller sized planters between garages



Solanum laxum



Trachelospermum asiaticum
'Snow N summer'

Examples of falling plants from balcony planters

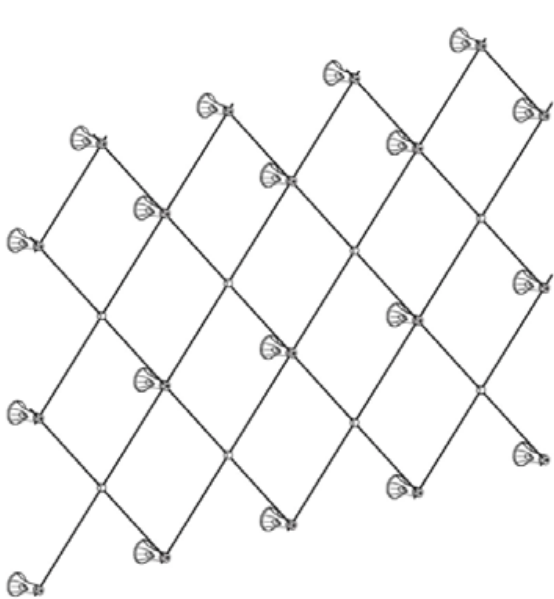


Visualisation



This one looks accurate. Could exaggerate falling planter plantings from above to give more green appeal.

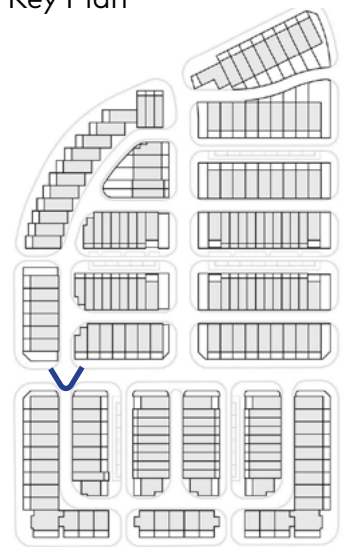
Cable tension wire mounted to wall



Artist Visualisation 01

View looking North from Secondary Road 03
towards Site 1.

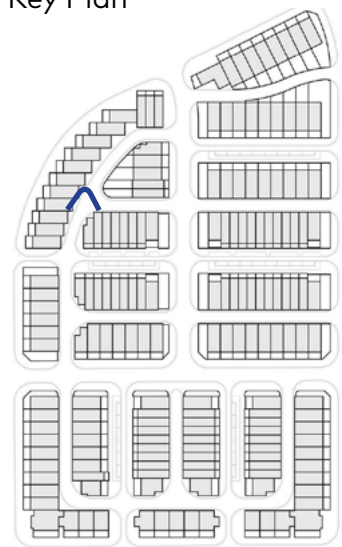
Key Plan



Artist Visualisation
02

View looking South from the intersection of
Rear Lane 02 and Rear Lane 03.

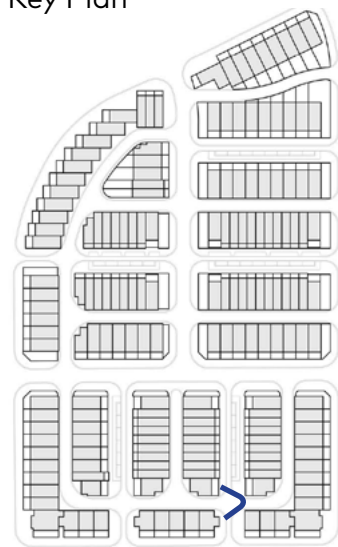
Key Plan



Artist Visualisation 03

View looking West from the intersection of
Rear Lane 05 and Access Road 04.

Key Plan



Artist Visualisation
04

View looking East from the intersection of
Rear Lane 02 and Rear Lane 04

Key Plan

